

Florida Native Plants for Bees

This is a list of plants carried at Wilcox Nursery that are especially attractive to bees. They will also attract a wide range of pollinators including beetles, butterflies, moths, and wasps. We have included plants that cover the entire year, with a special focus on early spring and fall plants.

Some other important garden features that support bee populations are water sources and nesting sites. Shallow dishes with a rough texture are ideal for bees. Smooth surfaces can lead to pollinators getting trapped in the water and drowning. Nesting sites include bare soil for ground-dwelling bees, clumping grasses, and dried, hollow stems. Leave dried stems over winter for nesting and resting sites. If you go out in the evenings, you can often find bees sleeping on the stalks of dried flowers or the seeds of grasses and sedges!



Longhorn Bees roosting



Honey Bee on Tropical Sage



Leaf cutter bee on Firebush

Key	
W	Wildflower
G	Groundcover
V	Vine
Sh	Shrub
Tr	Tree

Wildflowers and Groundcovers

Plant	Type	Blooms	Height	Width	Water	Sun
Sunshine Mimosa	G	Spring-Fall	6"	2 ft++	Avg-Dry	Full Sun
Blazing Star, Graceful	W	Fall	3 ft	1 ft	Avg-Dry	Full Sun
Blazing Star, Savanna	W	Fall	3 ft	1 ft	Moist-Avg	Full Sun
Blazing Star, Shortleaf	W	Fall	3 ft	1 ft	Avg-Dry	Full Sun
Blazing Star, Spicata	W	Fall	5 ft	1 ft	Moist-Avg	Full Sun
Button Rattlesnake Master	W	Spring-Fall	3 ft	18"	Dry-Very Dry	Full Sun
Goldenrod, Seaside	W	Fall	6+ ft	18"	Moist-Very Dry	Full Sun
Starry Rosinflower	W	Spring-Fall	3-4ft	18"	Avg-Dry	Full Sun
Scrub Mint	W	Spring-Fall	2 ft	2-3 ft	Dry-Very Dry	Full Sun
Tickseed, Lanceleaf	W	Spring-Fall	2 ft	2 ft	Avg - Very Dry	Full Sun
Tickseed, Leavenworth	W	Spring-Fall	2 ft	1 ft	Moist-Avg	Full Sun
Beach Mistflower	W/G	Year-round	1-2 ft	1-2 ft	Avg - Very Dry	Full Sun
Dotted Horsemint	W	Spring-Fall	3 ft	3-4 ft	Avg-Dry	Part - Full Sun
Goldenrod, Chapman's	W	Fall	2-3 ft	2-3 ft	Moist-Very Dry	Part - Full Sun
Saltmarsh Aster	W	Spring-Fall	2 ft	2 ft	Moist-Dry	Part - Full Sun
Tropical Sage	W	Year-round	3 ft	2-3 ft	Moist-Very Dry	Shade - Full Sun
Creeping Sage	G	Year-round	2 ft	3ft ++	Avg-Dry	Shade - Part Sun
Hammock Twinflower	G	Year-round	6"	2 ft+	Moist-Avg	Shade - Part Sun
Pineland Snowberry	G	Year-round	1-2 ft	3-4 ft	Avg - Very Dry	Shade - Part Sun

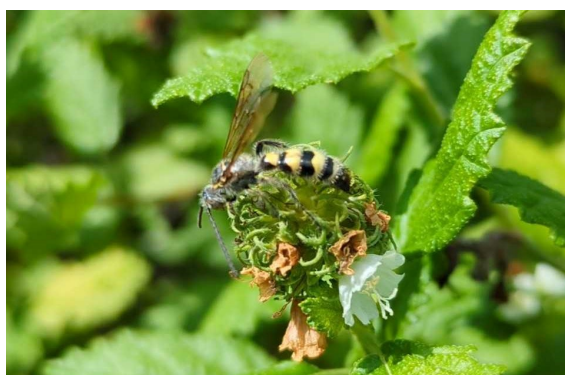
Florida Native Plants for Bees

Shrubs and Trees

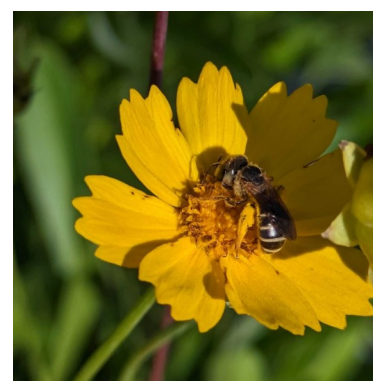
Plant	Type	Blooms	Height	Width	Water	Sun
Bloodberry	Sh	Year-round	3-4 ft	6-8 ft	Avg-Very Dry	Full Sun
Dwarf Saltbush	Sh	Fall	4 ft	4-6 ft	Dry-Very Dry	Full Sun
Fiddlewood	Sh	Spring-Fall	8-18 ft	5-12 ft	Dry-Very Dry	Full Sun
Grayleaf/Teabush	Sh	Year-round	6 ft	6 ft	Avg - Very Dry	Full Sun
Horizontal Cocoplum	Sh	Spring-Fall	6 ft	6 ft	Avg - Very Dry	Full Sun
Red-tipped Cocoplum	Sh	Spring-Fall	10-15 ft	10 ft	Avg- Very Dry	Full Sun
Rusty Lyonia	Sh	Late winter/Early Spring	10-15 ft	5-8 ft	Avg - Very Dry	Full Sun
Buttonsage	Sh	Year-round	4 ft	4 ft	Avg - Very Dry	Part - Full Sun
Firebush	Sh	Spring-Fall	10 ft	10 ft	Avg- Very Dry	Part - Full Sun
Simpson's Stopper	Sh	Year-round	10-15 ft	8-10 ft	Moist-Avg	Part - Full Sun
Walter's Viburnum, Schillers	Sh	Early Spring	4 ft	4 ft	Moist-Dry	Part - Full Sun
Walter's Viburnum	Sh	Early Spring	4 ft	4 ft	Moist-Dry	Part - Full Sun
Yaupon Holly	Sh	Spring-Summer	20 ft	15 ft	Moist-Dry	Part - Full Sun
Spicewood	Sh/Tr	Spring-Fall	15-20 ft	15-20 ft	Moist-Avg	Part - Full Sun
Weeping Yaupon Holly	Sh/Tr	Spring-Summer	20 ft	15 ft	Moist-Dry	Part - Full Sun
Dahoon Holly	Tr	Spring-Summer	20-25 ft	10-15 ft	Moist-Avg	Part - Full Sun
Fetterbush	Sh	Late winter/Early Spring	4-6 ft	4-6 ft	Moist- Avg	Part Shade-Full
Scrub Blueberry	Sh	Spring	3 ft	3 ft	Avg - Very Dry	Part Shade-Full
Fringe Tree	Tr	Late winter/Early Spring	15-20 ft	8-15 ft	Moist-Dry	Part Shade-Full
Coffee, Dwarf Shiny	Sh	Spring-Summer	3 ft	3 ft	Moist-Avg	Shade - Part
Coffee, Shiny	Sh	Spring-Summer	4-6 ft	4-6 ft	Moist-Avg	Shade - Part
Coffee, Softleaf	Sh	Spring-Summer	3-5 ft	3-5 ft	Moist-Avg	Shade - Part
Rouge Plant	Sh	Year round	3 ft	3 ft	Moist-Very Dry	Shade - Part



Sweat Bee on Starry Rosinflower



Scoliid wasp on Bloodberry/Butterfly Sage



Honey Bee on Lanceleaf Tickseed

Vines

Plant	Type	Blooms	Height	Width	Water	Sun
Skyblue Clustervine	V	Winter	6-12 ft	6-12 ft	Moist-average	Full Sun
Purple Passion Flower	V	Spring-Fall	10 ft +	10 ft +	Average-Dry	Shade - Full Sun
Carolina Jessamine	V	Early Spring	4-20 ft	4-8 ft	Moist-Average	Shade - Full Sun
Crossvine	V	Spring	20 ft +	5 ft	Average - Dry	Shade - Full Sun